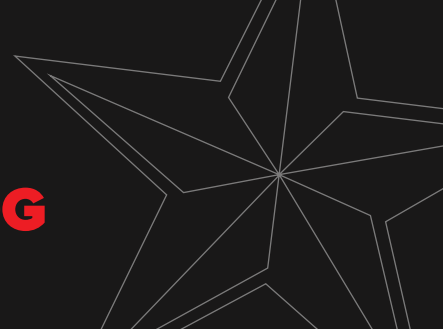


SHINGLE MANUFACTURING WEAR PARTS PRODUCT CATALOG



636.637.0962
GOODEARTHTOOLS.COM





GOOD EARTH TOOLS

TABLE OF CONTENTS

About Good Earth Tools (GET) **4**

Asphalt Shingle Manufacturing Overview **6**

About Carbide **8**

Wear Plates **12**

Diverters **14**

Assemblies **16**

Blades & Cutters **18**

Guides **20**

Screw Augers **22**



ABOUT GOOD EARTH TOOLS

Wear-Proofing Pioneers For More Than 60 Years



Good Earth Tools is a manufacturing company. But fundamentally, we're problem solvers and solution providers.

Our founders fine-tuned GET's Tungsten Carbide wear-proofing technologies as an answer to equipment challenges in the most demanding industrial applications — extreme heat, high impact, constant abrasion, erosion, and corrosion.

Industrial operations rely on dependable equipment to sustain safety, productivity, and profitability. Premature wear failures aren't an option. Routine downtime for maintenance and replacement isn't sustainable.

Good Earth Tools' Tungsten Carbide wear protection is the solution.



Built in Festus, MO, USA



ISO 9001:2015 Certified



OUR ENGINEERS

Bring decades of collective product design experience, ranging from custom one-off products to long production runs.



OUR FACILITIES

Include a full CNC machine shop, as well as fabrication and induction brazing capabilities, enabling us to tailor turnkey solutions for every kind of wear-life problem.



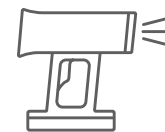
OUR FAMILY-RUN BUSINESS

Started in a Missouri backyard in 1964. It's grown into a world leader in designing, engineering, and manufacturing carbide solutions.



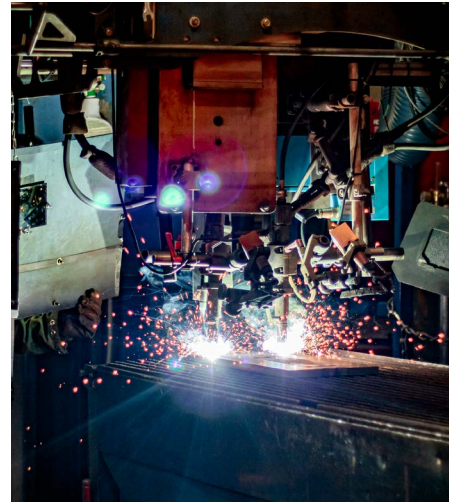
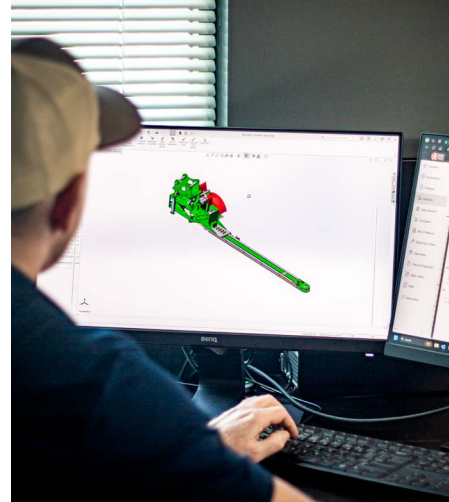
OUR TEAM

Believes in upholding the longstanding Good Earth Tools mission: "To partner with our customers to deliver the very best."



OUR CUSTOM CAPABILITIES

By utilizing the advanced Leo Scanner, we can accurately capture the exact specifications of your existing parts directly at your facility, ensuring precise measurements and minimizing downtime. Our expert engineers then develop custom solutions—whether full replacements or patch repairs—that guarantee optimal performance and lasting value. These near-custom solutions are designed for maximum durability and efficiency, tailored to the specific needs of your operations.



ASPHALT SHINGLE MANUFACTURING

As a manufacturing company that specializes in wear-proofing industrial products, we work with customers across a range of industries and markets, from asphalt shingle manufacturing to mining, mineral processing, power generation, agriculture, and beyond.

Every business has unique needs and challenges. But most share similar goals:

- Maximizing Uptime
- Increasing Maintenance Intervals
- Controlling Tolerances
- Maximizing Product Consistency
- Reducing Spare Parts Inventory
- Designed and Made to Your Requirements

Good Earth Tools' Tungsten Carbide wear-proofing technologies were built to support those goals.

With customized, carbide-protected equipment and parts, wear-life problems are solvable — and profitability goals are reachable — even in the most extreme applications.

GET CARBIDE HAS YOU COVERED

Up to 10X Times Longer

Shingle manufacturing equipment stays in near constant contact with liquid asphalt, metallic particles, and ceramic granules. And in that highly abrasive environment, ceramic protection doesn't last.

With Tungsten Carbide wear protection, Good Earth Tools can extend wear life, cut down on culls and stoppages, and save your operation time and money.

GOOD EARTH TOOLS

ABOUT CARBIDE

WHAT IT IS

A Rugged Compound

Tungsten Carbide noun • / tuhng-stuhn kahr-bahyd /

Man-made composite material of powdered tungsten particles bonded in high heat to a matrix of cobalt or nickel. Characterized by extreme hardness, toughness, density, and compressive strength.

WHY IT'S BETTER

Increased Productivity. Reduced Downtime.

Carbide isn't a metal, and it isn't ceramic. The high-performance compound is more like the best of both materials combined, then amplified.

In the production process, tungsten maximizes abrasion resistance while the cobalt binder increases strength.

The result: Machines and parts fabricated or wear-proofed using Tungsten Carbide stay stronger for longer than ceramic or steel — meaning fewer repairs and replacement parts and lower operating costs.

HOW CARBIDE MEASURES UP

HARDNESS

On the Vickers Hardness Scale, carbide falls anywhere from 1500-2200 HV — over twice as hard as hardened steel.

HEAT RESISTANCE

Carbide reliably performs at temperatures that start to soften other materials — even approaching 1000° F.

WEAR RESISTANCE

Carbide can last longer against extreme abrasion than typical steel by a factor of 25 to 1 or more.

CORROSION RESISTANCE

We can formulate grades to resist acetone, ethanol, gasoline, ammonia, most bases, weak acids, and other solvents.

ADAPTABILITY

By varying particle size, binder, or alloying agents, carbide can be tailored for broad applications — from wear-proofing to wedding bands.



ABOUT CARBIDE

OUR CARBIDE VARIETIES

Custom Solutions for Every Application

STARCARB™

**Unique feature:**

Up to 30x increase in product life over steel

Excels against:

High impact, heavy wear, corrosive environments

TUFFCARB™

**Unique feature:**

Cost-effective, wear life compares to solid Tungsten Carbide

Excels against:

Heavy-impact applications, budget limitations

TIGERCARB™

**Unique feature:**

Designed to withstand steady impact and abrasion (hammers, chippers)

Excels against:

High impact, high-speed particle streams

FLEXCARB™

**Unique feature:**

Flexible substance that conforms to component shape

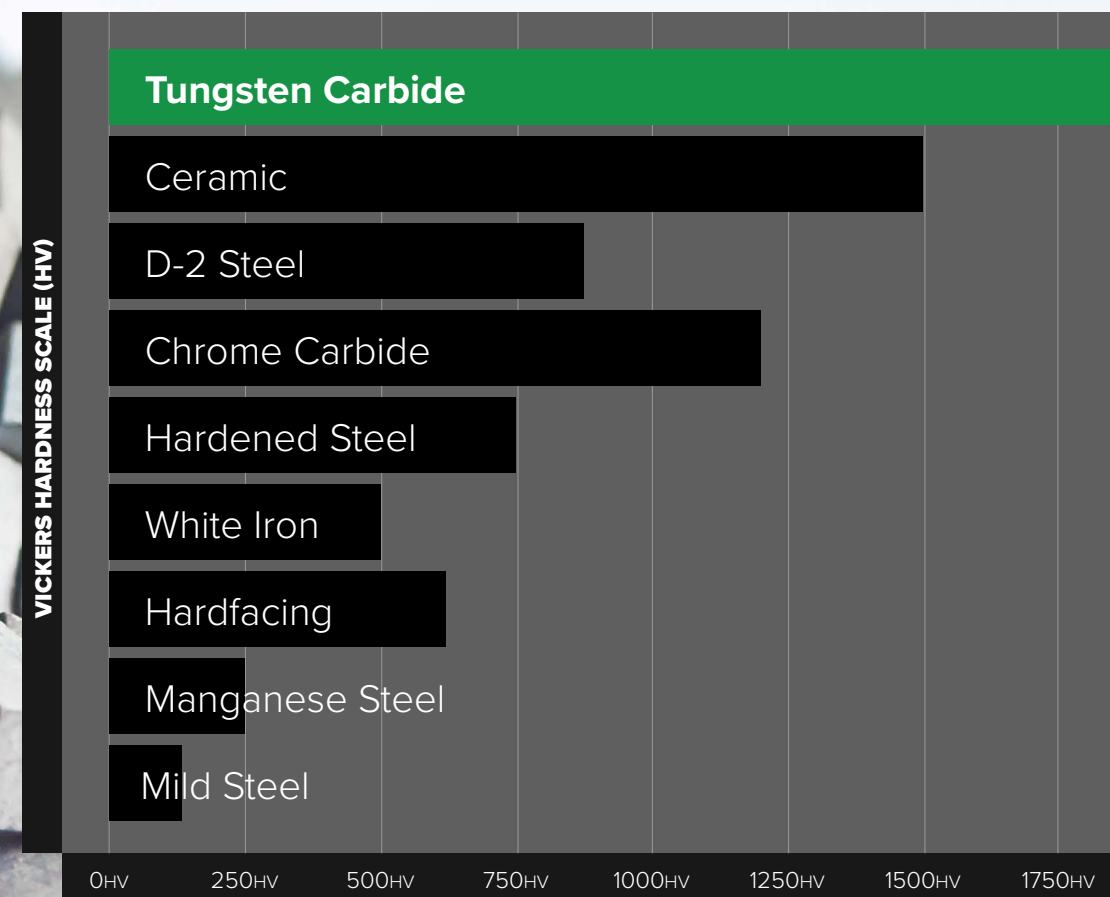
Excels against:

Impact, abrasion, erosion, corrosion, high heat

VICKERS HARDNESS (HV) SCALE

See how other materials stack up against carbide.

Tungsten carbide ranks at the top of the Vickers Hardness scale, making it one of the hardest materials available, significantly outperforming steel. This exceptional hardness ensures superior wear resistance and longevity in demanding applications.



GOOD EARTH TOOLS



Wear Plates

Our Carbide Wear Plates are engineered to mitigate premature wear in critical areas of your asphalt shingle manufacturing process. Available in various styles, these plates can be engineered in a wide array of dimensions to fit your specific application. Custom Wear Plates can be produced with tungsten carbide or ceramic hybrid options, both offering enhanced durability. They help guide shingles consistently without grooving and can be tailored to the exact dimensions your process requires. Whether short or long, these plates are designed to guide sheets seamlessly through the manufacturing process, accommodating all shapes, sizes, and angles.

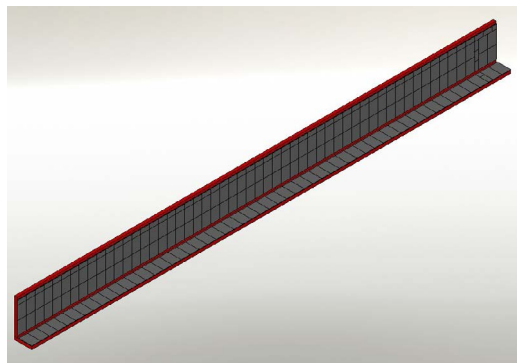
OFFERINGS

- Carbide Wear Plates
- Custom Wear Plates
- Inlet Plates
- Backer Guide Plates
- Skid Plates
- Entry Plates
- Paint Applicator Wear Plates
- Curved Entry Plates
- Curved Skid Plates
- Center Lane Transition Plate

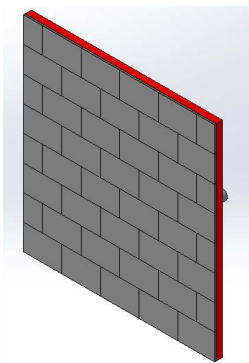
SPECIFICATIONS

The largest single wear plate we typically produce measures 36x36 inches. For requirements exceeding these dimensions, we can customize larger plates by welding multiple plates together to meet your specific needs. Contact us to learn more.

RENDERINGS

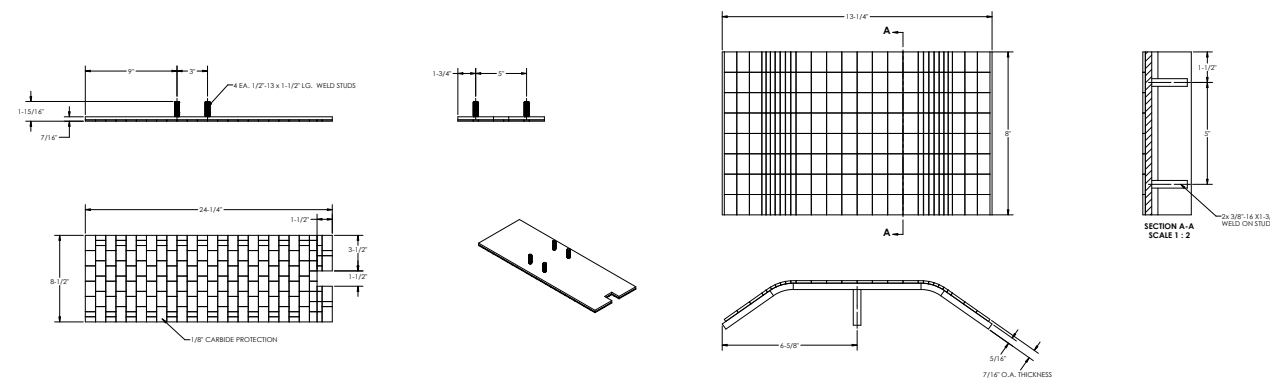


GET-706893 BACKER PLATE



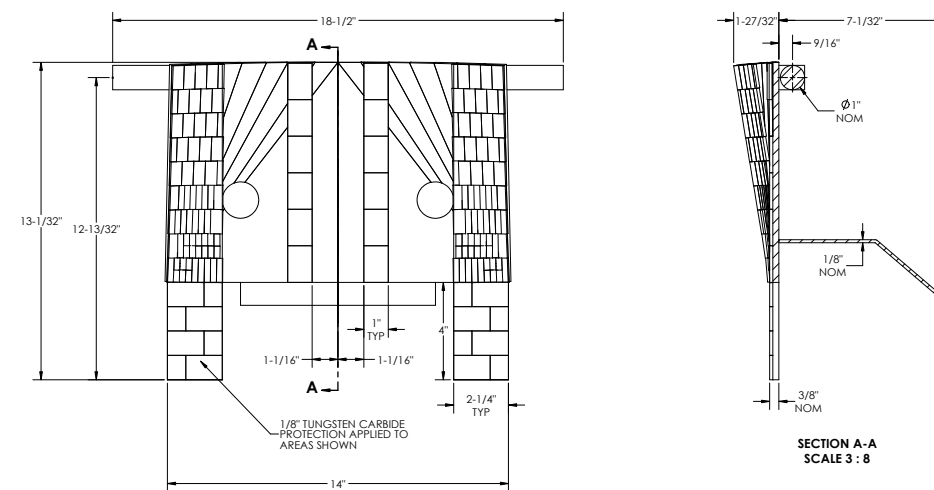
GET-705879 WEAR PLATE

EXAMPLE DRAWINGS



GET-707978-CENTER LANE TRANSITION PLATE

GET-707734-ENTRY PLATE



GET-707990-SKID PLATE



Diverters

Our Diverters are essential for controlling and directing the flow of materials during the manufacturing process. Crafted to meet diverse needs, these components are available in various shapes and sizes, ensuring seamless integration into your existing system. Whether you require precision guiding or effective material distribution, our diverters are built to enhance efficiency and maintain consistent production flow. With the option for custom fabrication, we can provide solutions tailored to your specific requirements, ensuring optimal performance and durability.

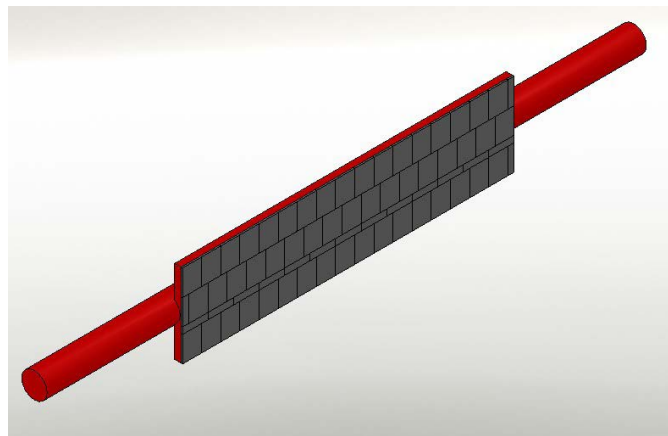
OFFERINGS

- Diverter Plate
- Belt Diverter Arm
- Large Diverter Funnel
- Wig Wag (Diverter Fingers)

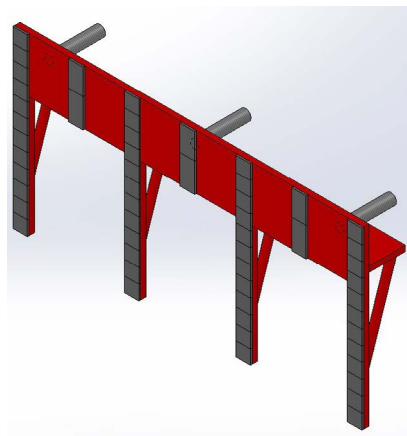
SPECIFICATIONS

Diverter components come in a wide range of sizes and configurations to suit your unique requirements. For specialized needs, we offer custom-designed and fabricated solutions that fit specific equipment and applications, guaranteeing the best performance and longevity.

RENDERINGS

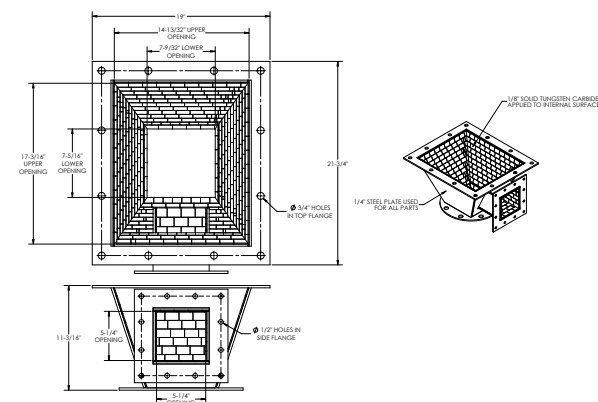


GET-706662 DIVERTER PLATE

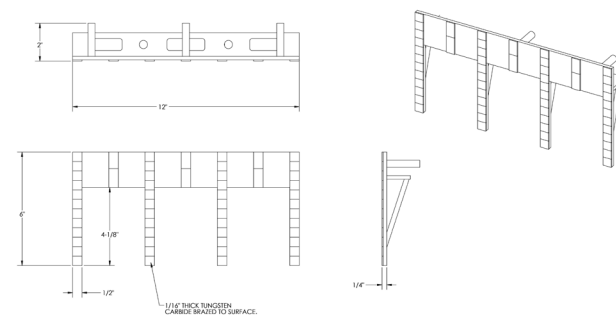


GET-704770 DIVERTER FINGERS

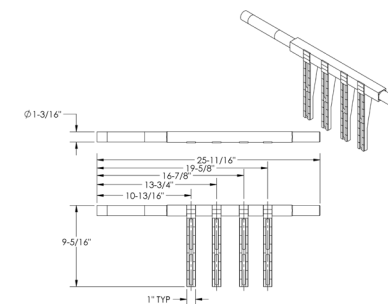
EXAMPLE DRAWINGS



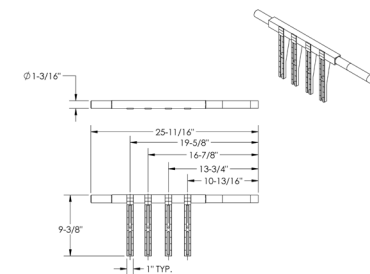
GET-707998 LARGE DIVERTER FUNNEL



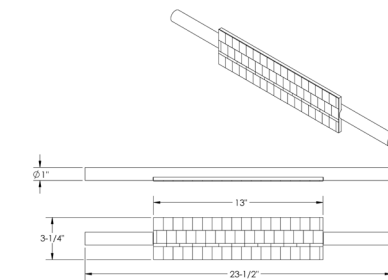
GET-707990-SKID PLATE



GET-706646-DIVERTER ARM



GET-706645-DIVERTER ARM



GET-706662-DIVERTER PLATE



Blades & Cutters

Our Blades and Cutters are designed for precision and durability in demanding manufacturing environments. These components can be produced with custom tungsten carbide or ceramic hybrid options to meet specific operational needs, ensuring superior performance and longevity.

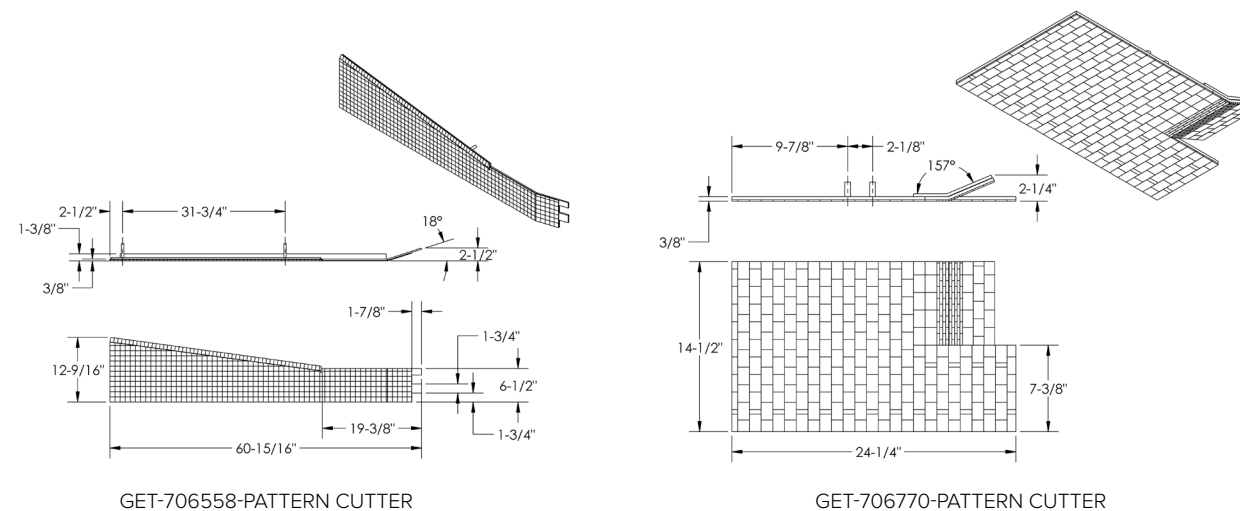
OFFERINGS

- Hopper Blades
- Pattern Cutters

SPECIFICATIONS

Blades and cutters can be produced in all shapes and sizes, tailored to fit your unique requirements. Custom solutions are available to ensure optimal performance and durability in your specific application.

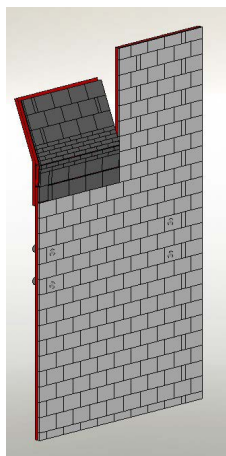
EXAMPLE DRAWINGS



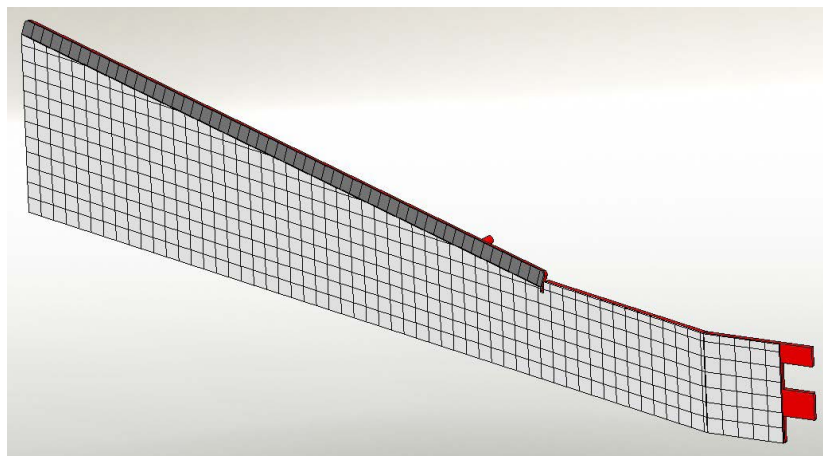
GET-706558-PATTERN CUTTER

GET-706770-PATTERN CUTTER

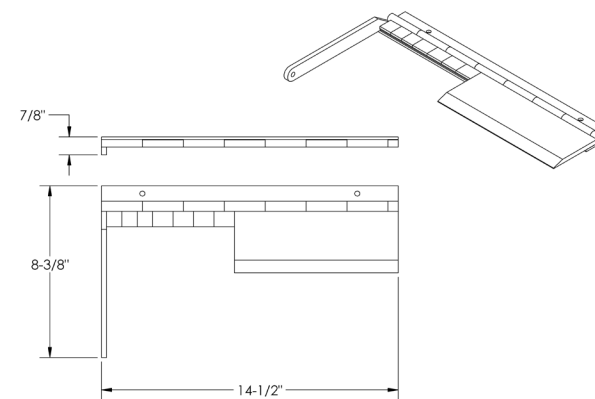
RENDERINGS



GET-706770
PATTERN CUTTER



GET-706558
PATTERN CUTTER



GET-706729-HOPPER BLADE



Assemblies

Our Cone Assemblies are designed to fit inside a funnel, directing granules onto wet asphalt. This high-wear area, exposed to constant abrasion from granules, requires robust protection. The Cone Assembly acts as a liner kit for the inside of the funnel, providing enhanced durability and extending the life of the equipment.

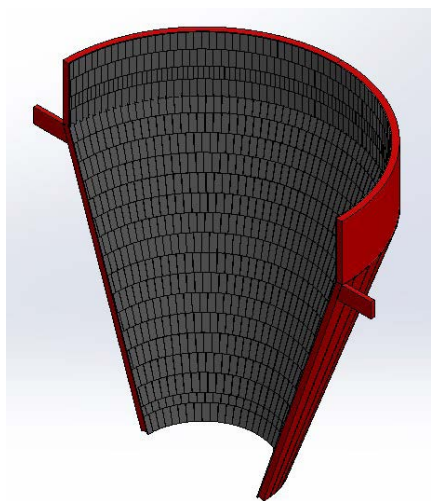
OFFERINGS

- Cone Assemblies

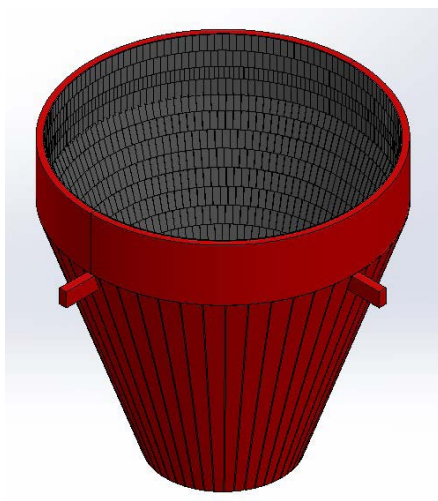
SPECIFICATIONS

Cone Assemblies can be produced in various sizes and configurations to match your specific requirements. For custom needs, we offer tailored solutions to ensure optimal performance and longevity in your application.

RENDERINGS

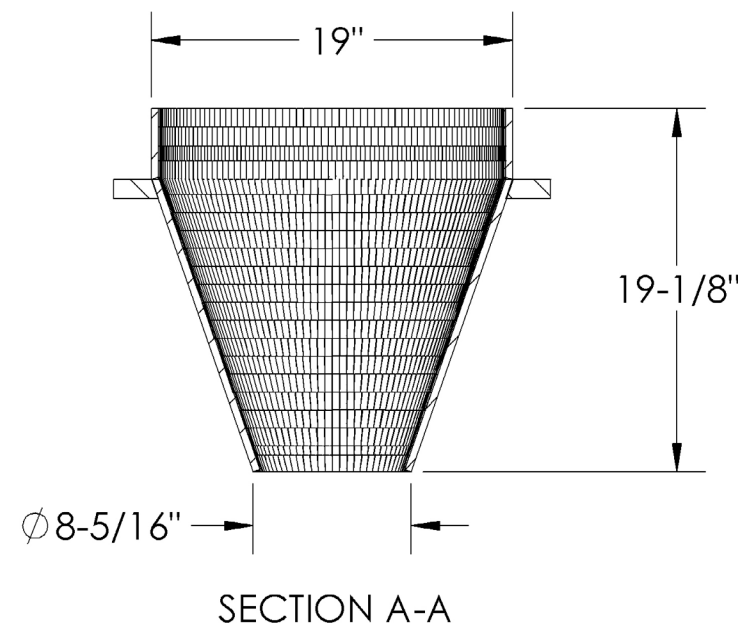
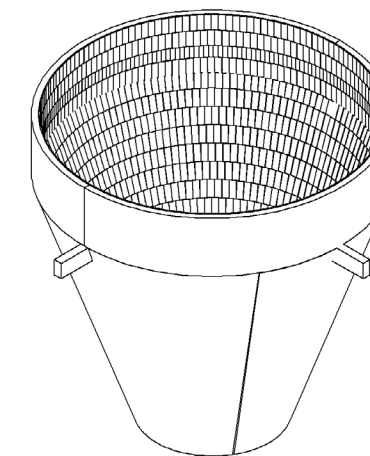
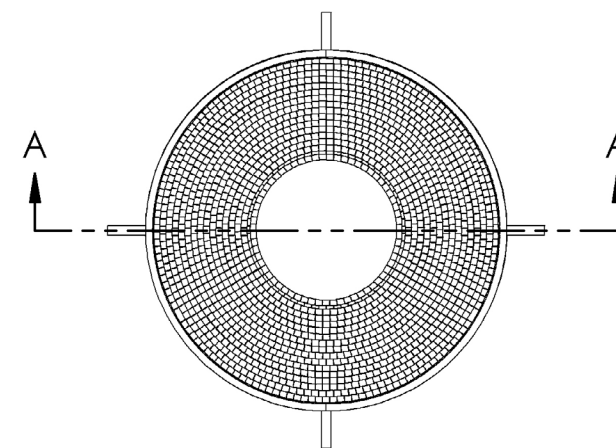


GET-706725 CONE ASSEMBLY



GET-706725-CONE ASSEMBLY

EXAMPLE DRAWINGS



GET-706725-CONE ASSEMBLY



Guides

Our Guides ensure seamless movement of shingles down conveyors without interruption. Designed to handle critical turns, these guides maintain the flow of shingles efficiently while preventing premature wear with durable carbide construction.

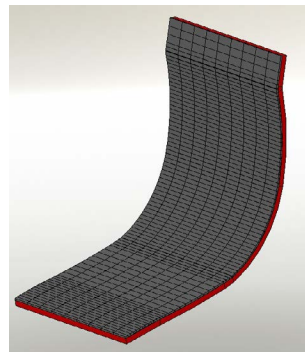
OFFERINGS

- Shingle Conveying Guides
- Dragontooth Liners
- Post Wig Wag Guide (Post Diverter Guide)

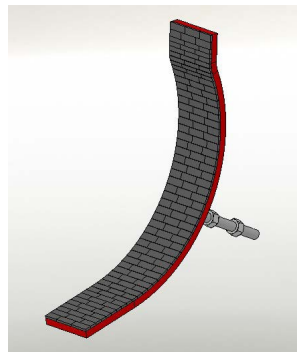
SPECIFICATIONS

Guides can be produced in varying lengths and heights with minimal limitations, allowing for custom solutions tailored to your specific needs.

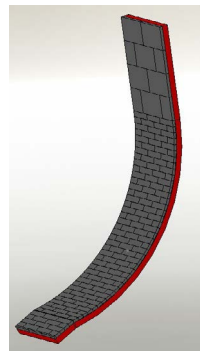
RENDERINGS



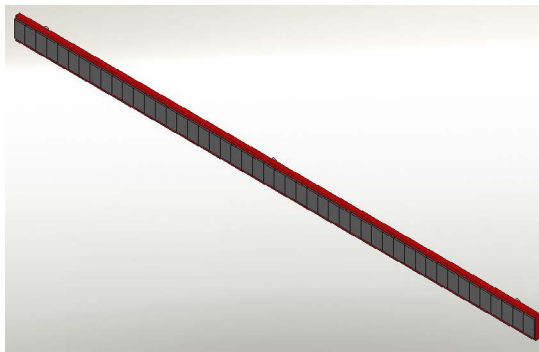
GET-708073
DRAGONTOOTH LINER



GET-706629
DRAGONTOOTH LINER

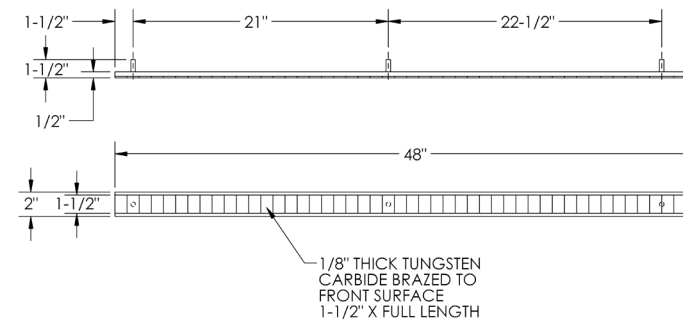


GET-706244
DRAGONTOOTH LINER,
TURN GUIDE

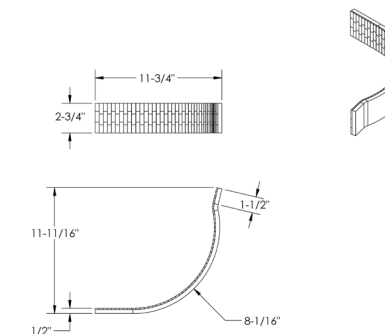


GET-705527 SHINGLE
CONVEYING GUIDE

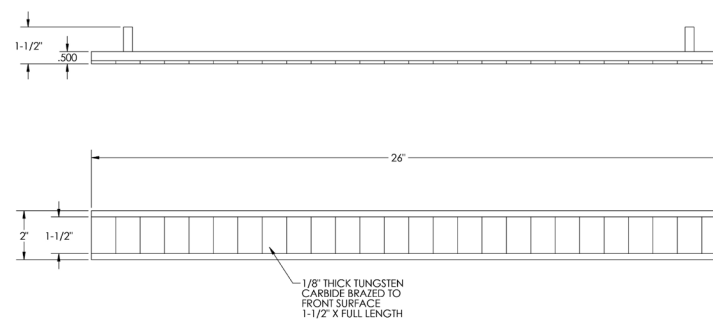
EXAMPLE DRAWINGS



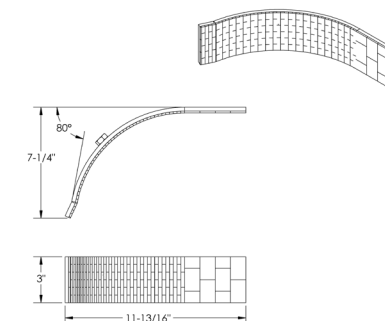
GET-705527 SHINGLE
CONVEYING GUIDE



GET-706244
DRAGONTOOTH LINER



GET-705532 SHINGLE
CONVEYING GUIDES



GET-706629
DRAGONTOOTH LINER



Screw Auger

Our Screw Augers are designed to efficiently convey materials such as sand and granules. With customizable carbide wear-proofing locations, these augers can be tailored to meet your specific needs, ensuring durability and long-lasting performance in high-wear applications.

OFFERINGS

- Screw Auger

SPECIFICATIONS

Screw Augers can be produced in various sizes and configurations to match your unique requirements. Customizable wear-proofing ensures optimal performance and longevity, even in the most demanding environments.

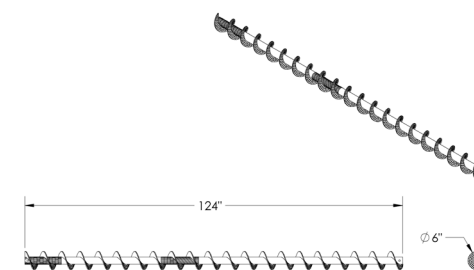
RENDERINGS



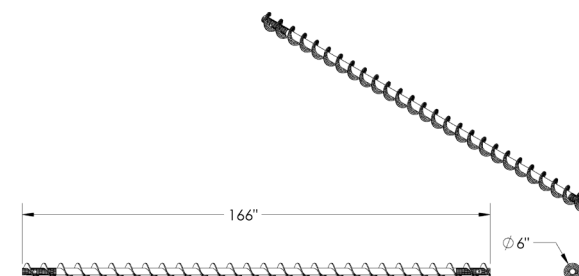
GET-706682 SCREW AUGER

EXAMPLE DRAWINGS

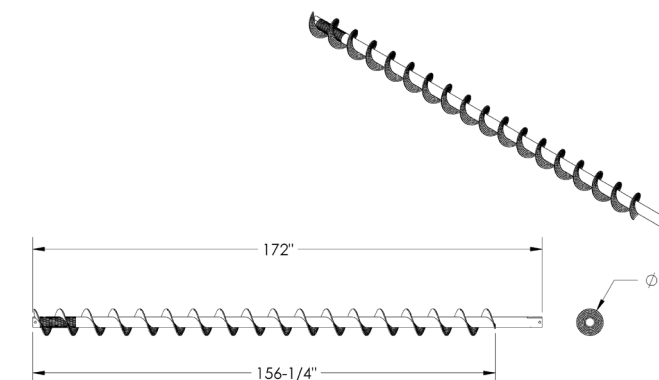
GET-706680-SCREW AUGER



GET-706679-SCREW AUGER



GET-706682-SCREW AUGER



SHINGLE MANUFACTURING WEAR PARTS PRODUCT CATALOG



636.637.0962
GOODEARTHTOOLS.COM

150 Industrial Drive Festus, MO 63028 USA

